

[Print](#)**SHIP DETAIL**

Ship Name	<b>BERKSHIRE</b>	Shiptype	<b>LPG Tanker</b>
IMO/LR No.	<b>9369760</b>	Gross	<b>23,032</b>
Call Sign	<b>A8QJ9</b>	Deadweight	<b>26,466</b>
MMSI No.	<b>636013946</b>	Year of Build	<b>2008</b>
Flag	<b>Liberia</b>	Status	<b>In Service/Commission</b>
Operator	<b>Zodiac Maritime Ltd</b>	Shipbuilder	<b>Hyundai Heavy Inds - Ul...</b>

**CARGO OVERVIEW**

Grain	<b>0</b>	Bale	<b>0</b>	Liquid	<b>0</b>	Gas	<b>34,483</b>
TEU	<b>0</b>	TEU 14t	<b>0</b>	Insulated	<b>0</b>		

**COMPARTMENTS****TANKS**

3 Independent, Carbon Manganese Steel, Weir Lge Design, Polyurethane Foam Lined, Prismatic, Horizontal Aligned Tank(s)

**HATCHES****CAPACITIES**

Segregated Ballast 11,355; Liquid Gas 34,483

**SPECIALIST**

IGS, SBT, Closed Loading, VRS - Vapour Recovery System, -50 Minimum Temp (Centigrade), SPM Equipped, 1 Tongue Bow Stoppers, 200t SWL, 4 Lines (manifolds) per Side, **34.40m** Mid Point Manifold Forward (Light), **66.60m** Parallel Body Length (Light), **32.20m** Mid Point Manifold Aft (Light), **34.60m** Mid Point Manifold Forward (Ballast), **68.60m** Parallel Body Length (Ballast), **34.00m** Mid Point Manifold Aft (Ballast), **41.00m** Mid Point Manifold Forward (Laden), **83.40m** Parallel Body Length (Laden), **42.40m** Mid Point Manifold Aft (Laden), **88.18m** Bow to Centre Manifold, **0.300m** Manifold Discharge Diameter

**CARGO HANDLING GEAR**

Cargo Pumps 6 @ 400 M3/hr

**RO-RO (LANES, RAMPS & DOORS)****TOWAGE****MISCELLANEOUS****MACHINERY OVERVIEW**

1 oil engine driving 1 FP propeller at 127 rpm Total Power: Mcr 9,480kW (12,889hp) Service Speed: 16.50kts

**PRIME MOVER DETAIL**

**Design:** MAN-B&W, **Engine Builder:** Hyundai Heavy Industries Co Ltd - South Korea  
**1 x 6S50MC-C**, 2 Stroke, Single Acting, In-Line (Vertical)  
 6 Cy. 500 x 2000, Mcr: 9,480 kW (12,889 hp) at 127 rpm

**AUXILIARY ENGINES**

**Design:** Cummins, **Engine Builder:** Cummins  
**1 x 6CTA8.3-M**, 4 Stroke 6Cy.  
 114 x 135, Mcr: 188 kW

**Design:** B&W, **Engine Builder:** Hyundai4  
**4 x 5L23/30H**, 4 Stroke 5Cy.  
 225 x 300, Mcr: 650 kW

## AUXILIARY GENERATORS

---

**Aux Generator:** 4 x 615kW 450V 60Hz a.c.

## BUNKERS

---

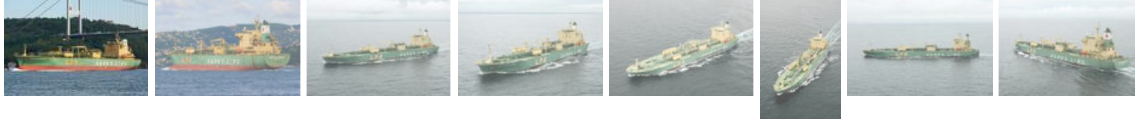
**Fuel:**Capacity - Distillate Fuel: 233 cu m, Residual Fuel: 1,826 cu m

## THRUSTERS

---

## PHOTOGRAPHS

---



[Play Slideshow](#)

[< Previous Photo](#) [Next Photo >](#)



Photo 1 of 10

## AIS POSITION

---

To add this optional module to your subscription simply click here

Sanko  
Independence

Photo Date: 2014-  
08-08

## MOVEMENTS

---

To add this optional module to your subscription simply click here

Copyright:  
hasenpusch-  
photo@t-online.de

## TRADING AREAS LAST 12 MONTHS

---

East and South Africa  
Far East  
Gulf - Red Sea - India  
South East Asia

## CALLINGS VISUALISATION

---

To add this optional module to your subscription simply click here

## CALLINGS CALENDAR

---

To add this optional module to your subscription simply click here

## BERTH CALLS

---

To add this optional module to your subscription simply click here

---

© 2018 IHS Global Limited. IHS Global Limited assumes no responsibility and shall not be liable to any person for any loss, damage or expense caused by reliance on the information or advice in this document or howsoever provided, unless that person has a contract with IHS Global Limited and in that case any responsibility or liability is exclusively on the terms and conditions set out in that contract.